

DISASTER READY TOGETHER SUMMIT 2024

KEYNOTE #1 DISASTER RECOVERY: WHERE ARE WE AND WHAT COMES NEXT? DR. KATE BRADY



Welcome to the 1st Regional Resilience Summit!

An opportunity to get together & build a space to get better together!

Ely Bird - Resilient Lismore

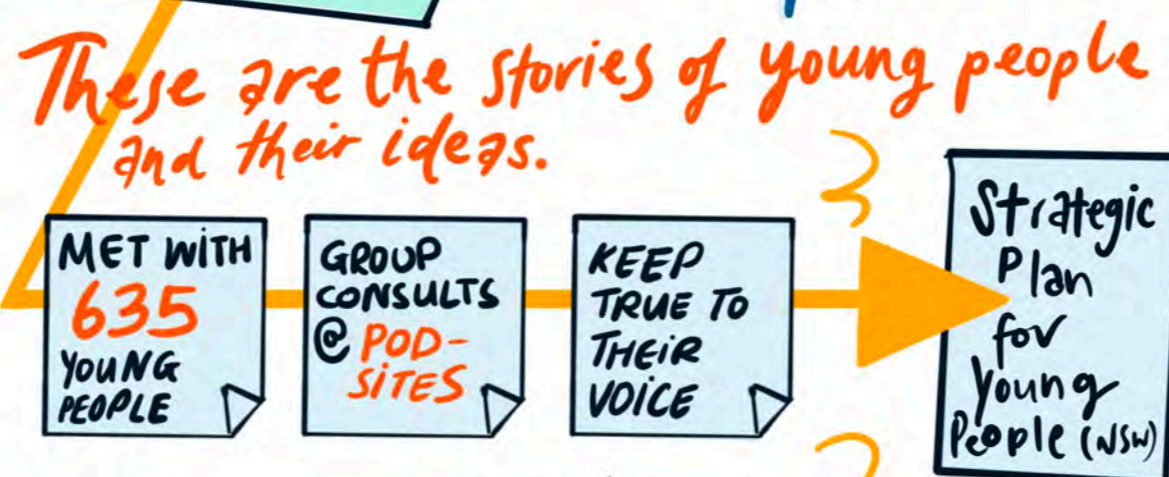
On the street, my grandfather and his mates would call **"BUNDJALUNG!"** to greet each other. He said it means: **"ONE PEOPLE"** Even though we're different tribes.

UNCLE MICK - BUNDJALUNG

KEYNOTE 2 CULTURAL CAPITALS ENHANCING DISASTER RESILIENCE



BREAKOUT Zoë Robinson AND A PANEL OF YOUNG PEOPLE VOICES OF CHILDREN AND YOUNG PEOPLE IN RECOVERY + HOPE FOR THE FUTURE!



A DANCE TO WELCOME YOU AND CLEANSE THE SPACE

WELCOME YOU AND CLEANSE THE SPACE

Young People being heard!

Flood vouchers (# obviously) for sports uniforms etc.

COMMUNITY COMMUNICATION IS VITAL!

BREAKOUT Lisa McPhie + Linda Fitzpatrick STAFF WELLBEING IN THE CONTEXT OF DISASTERS

ADRENALINE STATE

- INVOLUNTARY STATE OF BEING
- EGO + TUNNEL VISION - CUTOFF FROM BODIES
- ARGUMENTAL

NOVELTY-UNCERTAINTY CONFLICT RESPAK

WHAT CAN MANAGERS DO?

- A Leadership role pivoting to focus on worker wellbeing
- Outcomes beyond KPIs
- Self-care + regulation at work
- Sitting with funding body to share the lay of the land + expectations.

HUMAN SERVICES during disaster is unique because we are also living through it as well.

BETTER PREPAREDNESS Lismore is a flood zone, yet no-one knew what to do.

CONSULTS - BUT NOT AS A TICK-BOX

OVERVIEW OF EMERGENCY MANAGEMENT IN THE NORTHERN RIVERS



EVACUATION CENTRE OVERVIEW

BREAKOUT
AMANDA CAUSLEY & FEARGUS O'CONNOR

ROLES

1. Identification of sites - Local E.M. Committee
2. Decision to Evacuate - SES / RFS / Police
3. Activation of site
4. Open + manage - DCJ



Multi-agency approach

Northern Rivers are currently reviewing its arrangement + processes.

ACADEMIA

LOOKING AHEAD LISMORE: THINKING ABOUT THE FUTURE!

BREAKOUT
Dan Etheridge AND S.C.U Living Lab Northern Rivers

We can't expect them to KNOW HOW with out the advice/tech Gov. has available.

EXPERT LOCAL + EXPERT TECHNICAL



Won't create solutions that work in a local context remotely.

CREATE A SPACE TO BRING TOGETHER TO DELIVER CHANGE

20yrs Ago... Go To New Orleans! started my journey..



LOOKING AHEAD CO-DESIGN PROJECT

Lived experience, co-design IDEATION WORKSHOP



What is Lismore's future vision?

DEBATED ABOUT - A second safe CBD

CBD HOUSING

MOVING OR KEEPING THE CBD.

There was disagreement, but we navigated it well so that it was still a productive workshop!"

We've turned our back to the river + there is opportunity to face it and connect with the river!

The state will prioritise the most isolated communities first.

Health Lessons

Utilise existing local resources - like the Emergency + Drug + alcohol Departments from the hospital.

A dedicated Medical Site Manager to assess + respond.



- Notification of a event near you
- Advice to stay or go
- Locate Evac. Centres

2022 Flood Learnings

Not enough Gov. Staff to respond.

Staff role confusion + overwhelmed

CONCRETE GUIDANCE



Stop staff BURNOUT

DOING MASSIVE RECRUITMENT NOW.

Volunteers

Emergency Management training and compliance for roles.

State Prefer working with Credited Volunteers

We want to have a handshake months in advance. So we can WORK WITH YOU TO BRING STATE + LOCAL TOGETHER!

Preparing + Best Practice Partnerships

Upcoming STATE ↔ LOCAL training

INTERNATIONAL PERSPECTIVES ON RESILIENCE + RECOVERY

BREAKOUT
Joanna Quilty + Bec McNaught

1. Disasters are a BILLION \$\$\$ industry and exacerbate inequality!
2. 1st Line of defence is LOCAL + SOCIAL CAPITAL
3. Social service NGOs are the LOGICAL PARTNERS - resourcing and coordination are essential.

Pre-existing Conditions determine resilience!

We can't afford to stay with B.A.U.



Can learn from the Pacific

Needs collaborative approach



RESILIENT LISMORE

GOLD SPONSORS



NSW RECONSTRUCTION AUTHORITY



DIOCESE OF LISMORE



Southern Cross University

EARLY CHILDHOOD

BREAKOUT
Sharleen Keleher + Local Early Childhood Centres Panel

People of all ages are learning to be resilient! We see it with children who are learning to cope with big loss...

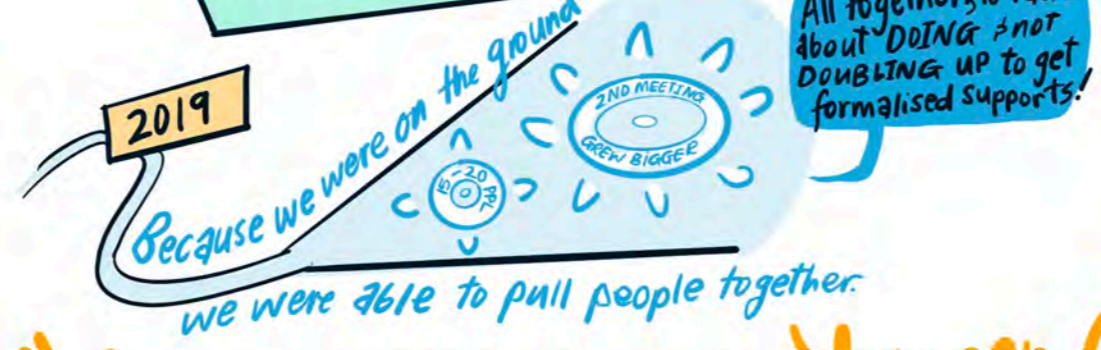


Childhood care workers translate knowledge FROM ADULTS TO CHILDREN!

Games Stories Examples
TELL STORIES + LEARN TO COPE WITH LOSS.
Children just want to understand and be included!

LEARNING FROM TRIALS OF COMMUNITY-LED RESILIENCE INNOVATIONS

BREAKOUT
Pr. Briony Rodgers, Helen Duroux + Pamela Denise



"Community-led doesn't mean Community alone."

- Collaboration instead of competing for funding
- Scope for projects to broaden to create systemic interventions
- A rich life is filled with connections and culture.

COMMUNITY-LED DISASTER RESPONSE

BREAKOUT
Natalie Meyer + Virginia Waters



Provides community with clarity on what to expect and who is doing what.
Community can PREPARE + RESPOND
PREPAREDNESS INCLUDES RESPONSE

"Our Goal is to augment what combat agencies can provide!"

COMMUNITY-LED RESILIENCE

Community members are in for the long haul!

BREAKOUT
Jean Renouf Dr. Jo Longman + Emma Pittaway

DEFINITION
"Community-led Response"

"People still struggling but can struggle together. Everyone is just doing their best."

Spontaneous!

Individuals stepping up!

Established & Informal orgs

Extending & community specific
Eg: Koori Mail

"It's okay to take a break. It will be there when you get back..."

BREAKOUT
Renee Havin CEO Resilient Ready
BUILDING ORGANISATIONAL RESILIENCE
#2 Those who run community orgs need to think + do differently

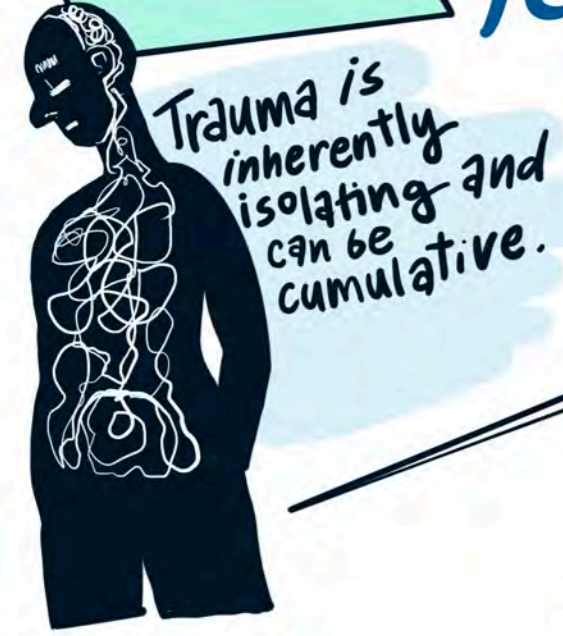
#1 In this new era of new, compounding disasters - communities need resilient + ready community organisations.

"Preparedness is not a static state but a dynamic process of growth and improvement."



FLOOD MENTAL HEALTH - TWO YEARS ON...

BREAKOUT
Emma Schubert + A Panel of local mental health workers.



D.R.T LOCAL PARTNERS:
Nimbin Neighbourhood Info Centre
Mid Richmond Neighbourhood Centre
Kyogle Together
Rekindling the Spirit

LEADING STAFF IN EMERGENCIES

BREAKOUT
Matt Rahmate + Samantha Albertini

- What social Futures and Kyogle Together learnt after the 2022 Floods:
- Wellbeing + community support of staff #1 PRIORITY.
 - communications are key
 - hard copy contact lists and locations
 - Suspend and assess BAU.



SENIOR DEPUTY VICE CHANCELLOR PROFESSOR MARY SPONGEBERG

Thank you to Bundjalung Communities & Koori Mail's recovery response and sharing knowledge on for a way forward.

KEYNOTE #3

PERSON CENTRED EMERGENCY PREPAREDNESS

ASSOCIATE PROFESSOR MICHELLE VILLENEUVE

People with disability have a lot to offer on how to be inclusive + accessible so EVERYONE benefits and are SAFE!

Engage with us from the start or not at all! Nothing for us, without us!

I can go and meet with Gov and come back ...

OK! Lets get to work!

✓ Invested 14 Months to build a relationship with the group members.

✓ Started small.

EVERYONE NEEDS A PLAN!

- Every individual
- Every household
- Every org + business
- Every Community

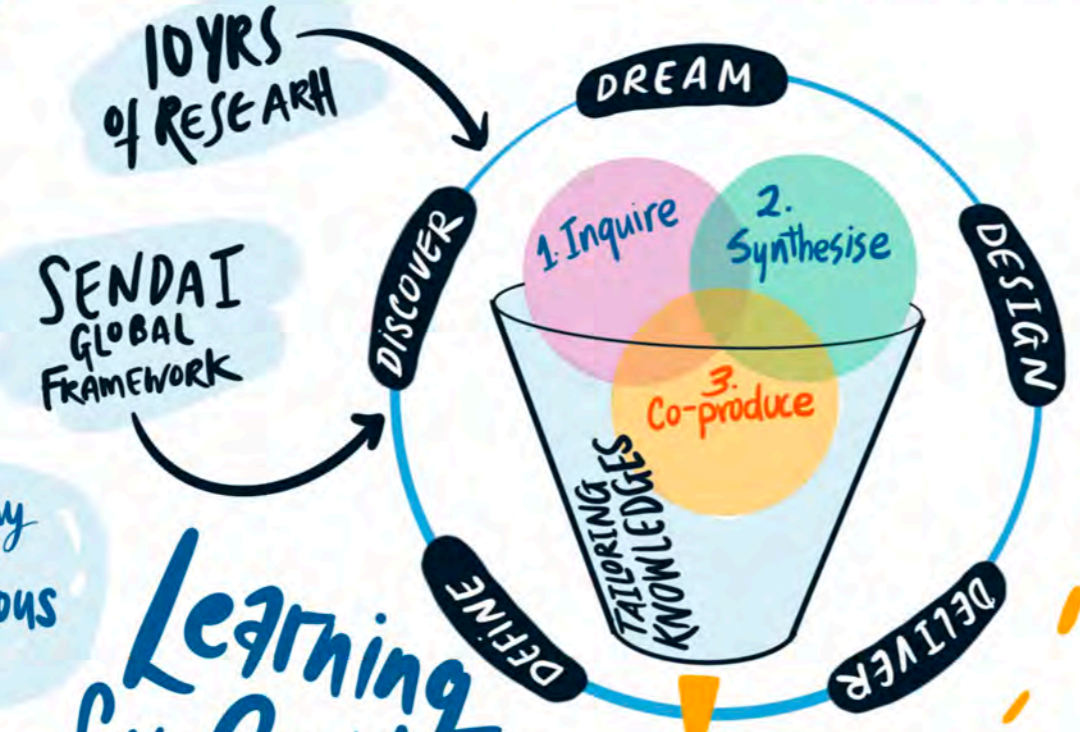
It is a human right for people with disability to have protection & inclusion across PREPAREDNESS DURING + POST disaster.

BREAKOUT BHIAMIE WILLIAMSON + PANEL OF LOCAL INDIGENOUS RECOVERY WORKERS

Community has obligation to Country but also want to help in any way to our wider local community.

Often services needed aren't funded and we need to come to a safe space for help.

WORKING WITH ABORIGINAL COMMUNITIES DURING + POST DISASTERS



- ## DIDRR
- P-CEP
 - DIEP
 - P-CEP CERTIFICATE
 - P-CEP CONNECT
 - ESDA

The tools we use matter!

They guide us and so we design for INCLUSION AND COLLABORATION at the core of our tools - which benefits everyone!

Country can teach us - we just need to listen. We can work together with farmers to preserve wildlife. Educating through Country!

Sprung!! DANCE THEATRE

We are the reporters + Anchors

TOP NEWS TODAY! SPRUNG! NEWS!

NEWS EXHIBITION

OUR FELT Flood IMPACTS

- Lost My Business + jobs
- Missed Birthday
- Dance studio flooded.

We really didn't know what was going on and a way to help.

Why not make our own news?

AN EXHIBITION OF OUR EXPERIENCES!

In our exhibition we use jibberish Ya-ka-la-pa-ka-ki-tal! so you can experience inaccessible news.

NEW IS INACCESSIBLE

- BORING
- LOAD OF BULLS
- LOTS OF WORDS
- LOTS OF TEXT
- NOT SUITABLE FOR EVERYONE.

NO AUSLAN
NO SUBS
TO WORDY
FAST!
WE DON'T WATCH it
→ 1HR late

If we can't hear/understand you it becomes a matter of life + death for us!

GOLD SPONSORS

Learning from Country

Get in touch with nature in order to work through natural disasters efficiently!

BREAKOUT Oli Costello + Rob + Boota

RESILIENT LISMORE

DAYNA HAYMAN

USING AND ADAPTING THE P-CEP APPROACH

BREAKOUT
LUKE BARBAGALLO
TRACY CROMPTON
LEA HINE

P-CEP is an approach to support those most marginalised by the system.

Can begin to embed impact into the community, even once the funding is gone.

Its important to do the plan + talk about it with friends.



Use existing LAG Diversity + Inclusion Plans as a way to connect P-CEP to councils.

Build awareness across these three stakeholders

About having good conversations on PREPAREDNESS



P-CEP's core is the "Capability wheel": Put it beside other plans for a reminder + visual thinkers.



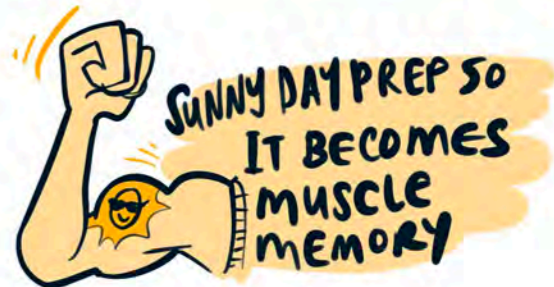
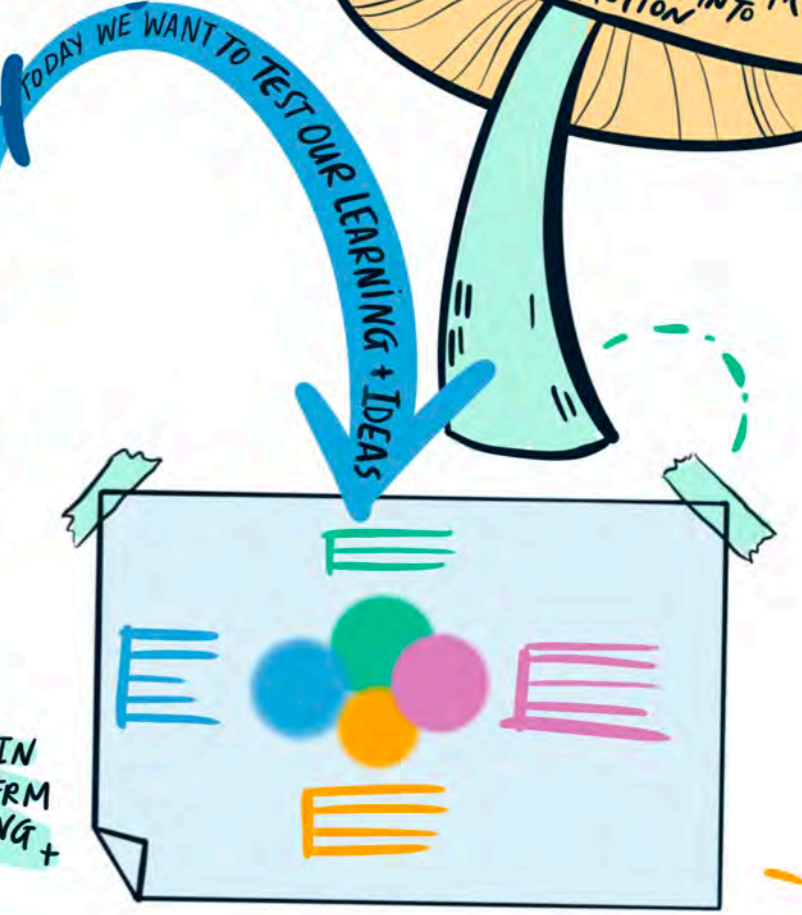
NG.O SECTOR'S ROLE IN DISASTER: ADVOCACY AND APPROACH

BREAKOUT
Cara Varian + Megan Nicholson



Learn about what works on the ground to show NGO value, connections and capability of the whole sector.

"MUSHROOM INITIATIVE" AN INFORMAL COMMUNITY GROUP THAT SPRING INTO ACTION



CLOSING PANEL WORKING TOGETHER!

- ELLY BIRD
RESILIENT LISMORE
- BHAMIE WILLIAMSON
FIRE TO FLOURISH
- JOANNA QUILTY
NSW RECONSTRUCTION AUTHORITY
- SGT MARK JOHNSTON
DEPUTY LECCON LEMC
- BEC McNAUGHT
RESEARCH FELLOW - UCRH

THIS SPACE HAS CHANGED: UNIFORMS < COMMUNITY SERVICES

2 YRS ago, if you'd told me I'd be at an event like this, I would have laughed in your face...

NW ENTERED A BUREAUCRACY STORM!

Governments were not ready and let you down.

Coming here to see everyone, learn + still see the effects was really grounding.



It felt like shifting deck chairs on the Titanic!

This is Aboriginal Peoples lives. We expect the disfunction + find fit for our community!

RECOVERY IS LONGER THAN TWO YRS!

We're actually getting busier as people have space now to process... Just as our funding is running out!

VOLUNTEERS FOR SES BUT NOT AS A RESERVE. BASIC TRAINING SO WE CAN TAPE + TARP CORRECTLY WHILE WE WAIT!

REFLECTIONS KEY ASKS STRATEGIC ADVOCACY ISSUES

ASKING FOR MORE CONVERSATIONS WITH FORMAL, COMMUNITY NGOs + INFORMAL SUPPORTS. BOOST THE NEXUS!

SUPPORT MUSHROOM GROUPS BY PROVIDING THE UNDERLYING STRUCTURES

DATA + RESEARCH + ADVOCACY TO EXPAND PROGRAMS.

Gov. don't know how to measure this!

KEY ACTION AREAS:
-> Network
-> Communications
-> Community.

Look inwards first so you are strong to support others.

Social Capital

RSS SERVICES HEADED FOR THE 2YR CLIFF
We know people need certainty and we're working on it!

RESILIENT LISMORE



GOLD SPONSORS



NSW RECONSTRUCTION AUTHORITY



DIOCESE OF LISMORE

